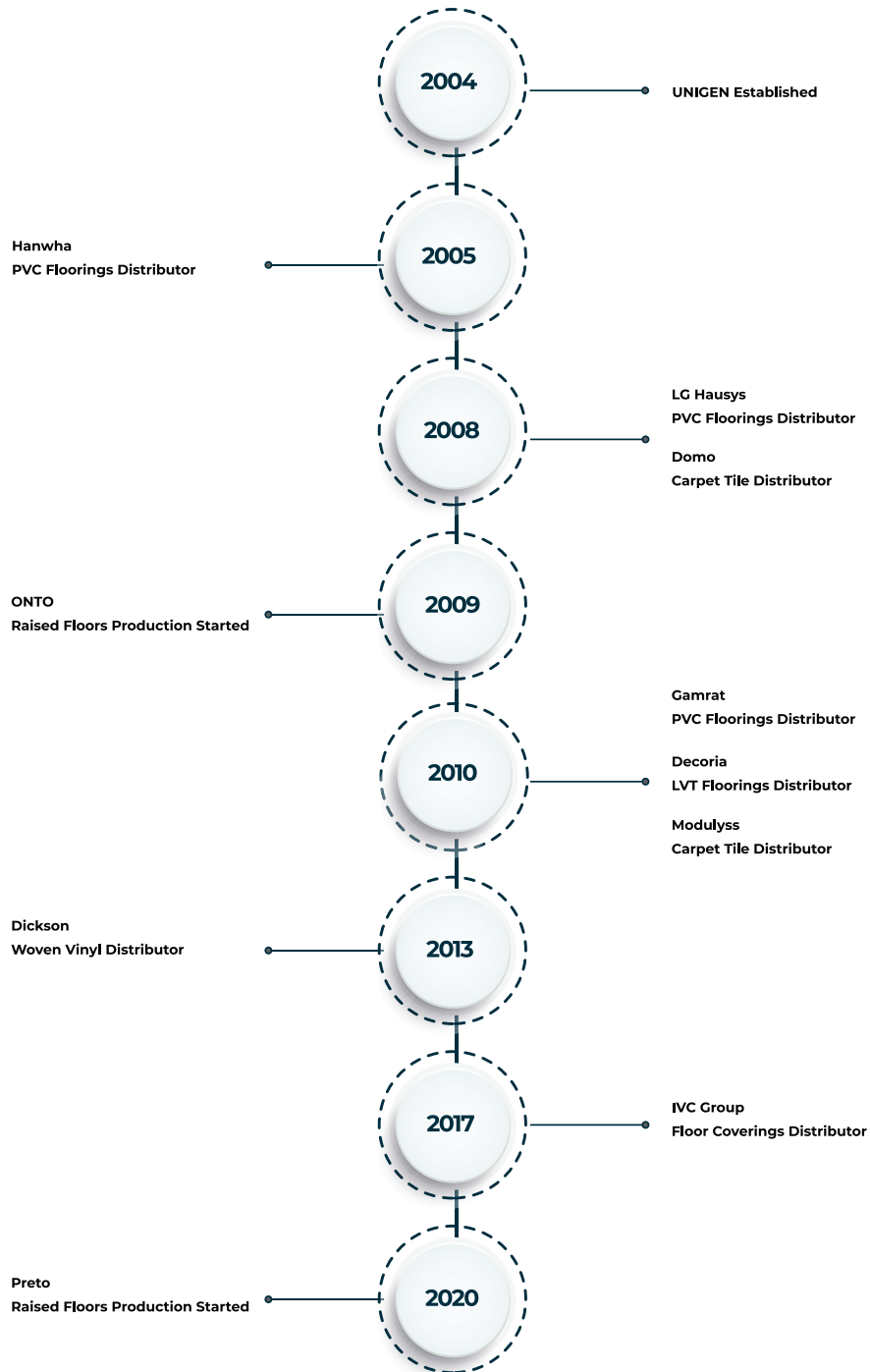




P R E T O

UNIGEN



UNIGEN



Unigen, was established in 2004, specialized in commercial flooring products and flooring installations, aiming to offer alternative products to the construction sector. Unigen conducts sales, marketing and installation activities in Turkey, as well as export to Europe, Middle East, CIS and Africa countries while increasing the diversity of products day by day with the mindset of high customer satisfaction.

As of 2009, the company started manufacturing raised access floor systems, chipboard and calcium sulphate core panel types and galvanized steel understructure systems are produced in Unigen factory in Turkey under the brand named as "Onto" and "Preto".

While using technologies for product development in its production facilities with a closed area of 7.000m² on a land of 20.000m², Unigen makes investments that consider a better future within a sustainable approach. Unigen develops new products and production technologies in cooperation with universities with its own test and R&D laboratories. With the help of solar panels, 429.500 kg carbon and 28.890 kg sulfur dioxide emissions are prevented yearly. Furthermore Unigen saves 10.000 tons of water every year by recycling process of all water used during production.

Unigen is also the representative of the world's leading brands in commercial floorings.

Carpet Tile; modulyss®, IVC Group
PVC Flooring; IVC Group
Luxury Vinyl Tile; Decoria®, IVC Group
Woven Vinyl; Dickson®

Unigen offers turnkey floor solutions that combine ideal quality and comfort in commercial spaces such as education, health, hospitality and office buildings with all product groups in its portfolio.



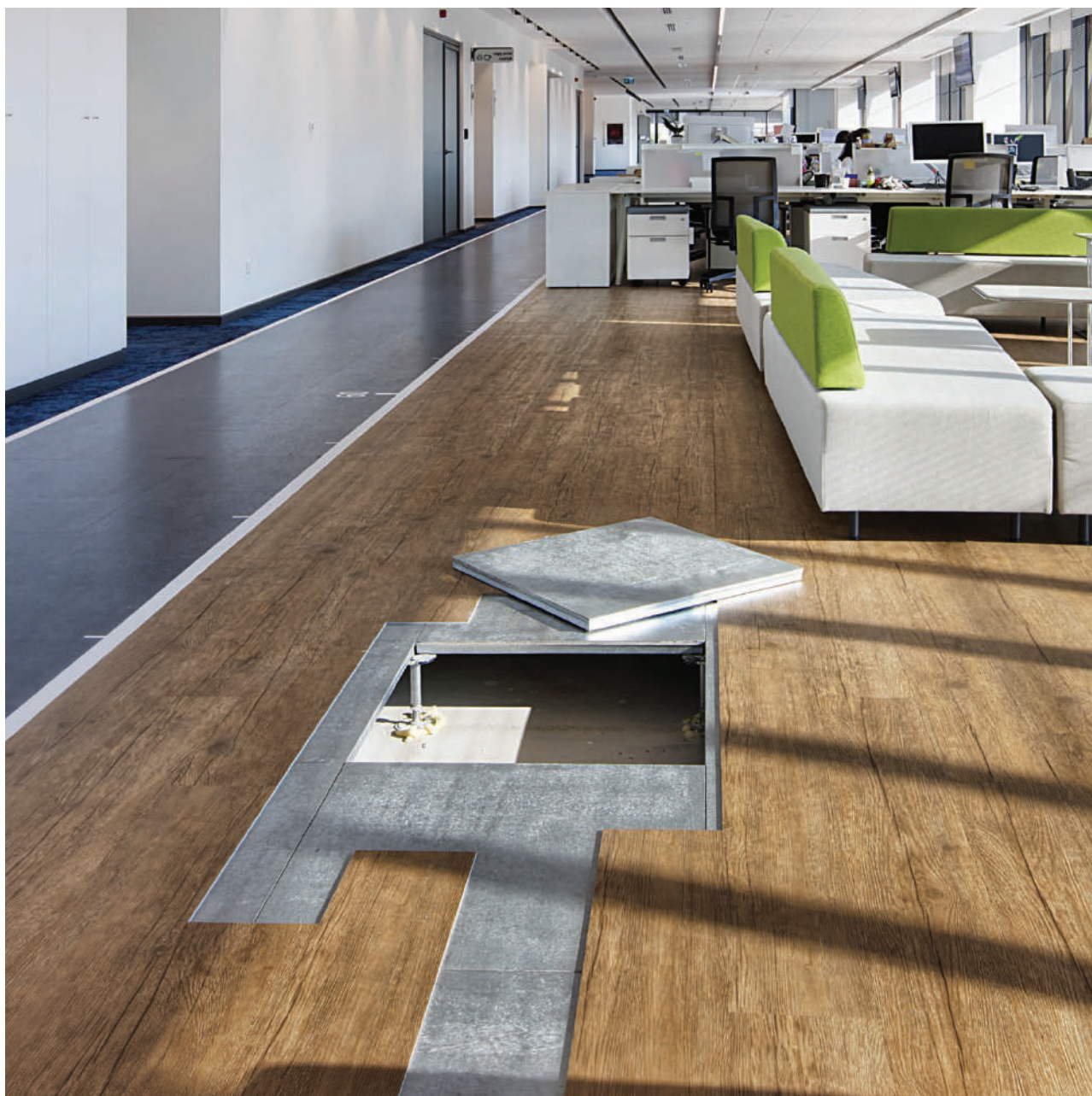








www.onto.com.tr



chipboard panels



28mm / 30 mm / 38 mm thickness, high density chipboard core is used depending on panel types of Onto. These panels are used for the areas which requires high loading capacities and Bfl_S1 fire resistance.

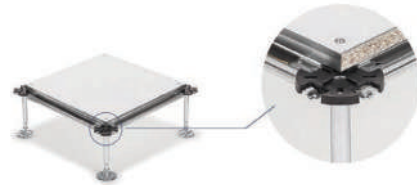
Panel Types;

- Encapsulated Panel
- Encapsulated Corner Lock Panel
- PVC Covered Panel
- HPL Covered Panel
- Bare Panel
- Aluminium Foil / Galvanized Steel Covered Panel
- Ceramic / Stone / Wood Covered Panel

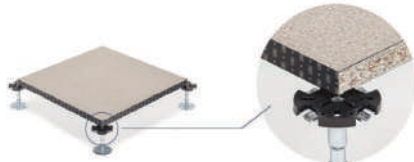




Encapsulated Chipboard Panel



Corner Lock Encapsulated Chipboard Panel



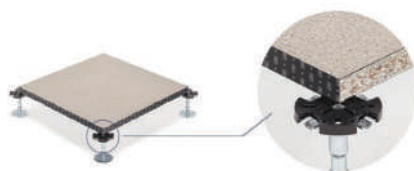
PVC Chipboard Panel



HPL Chipboard Panel

System with ffh:15 cm M14 pedestal

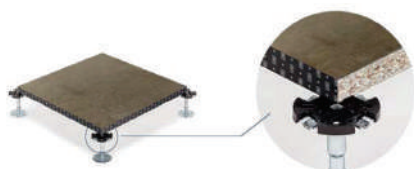
	Encapsulated Chipboard Panel	Corner Lock Encapsulated Chipboard Panel	PVC Chipboard Panel				HPL Chipboard Panel			
Product Code	EN-S28	EN-SCL28	PF-S30	PF-S38	PG-S30	PG-S38	LF-S30	LF-S38	LG-S30	LG-S38
Top Covering	Galvanized Steel	Galvanized Steel	2,0 mm Antistatic PVC	2,0 mm Antistatic PVC	2,0 mm Antistatic PVC	2,0 mm Antistatic PVC	1,0 mm HPL	1,0 mm HPL	1,0 mm HPL	1,0 mm HPL
Core	28 mm High Density Chipboard	28 mm High Density Chipboard	30 mm High Density Chipboard	38 mm High Density Chipboard	30 mm High Density Chipboard	38 mm High Density Chipboard	30 mm High Density Chipboard	38 mm High Density Chipboard	30 mm High Density Chipboard	38 mm High Density Chipboard
Bottom Covering	Galvanized Steel	Galvanized Steel	Aluminium Foil	Aluminium Foil	Galvanized Steel	Galvanized Steel	Aluminium Foil	Aluminium Foil	Galvanized Steel	Galvanized Steel
Edge Covering	Galvanized Steel	Galvanized Steel	Antistatic PVC Edge Band	Antistatic PVC Edge Band	Antistatic PVC Edge Band	Antistatic PVC Edge Band	Antistatic PVC Edge Band	Antistatic PVC Edge Band	Antistatic PVC Edge Band	Antistatic PVC Edge Band
Ultimate Load	7,4 kN	7,4 kN	4,0 kN	6,2 kN	6,3 kN	8,6 kN	4,0 kN	6,2 kN	6,3 kN	8,6 kN
Working Load	2,5 kN	2,5 kN	1,5 kN	2,1 kN	2,1 kN	2,9 kN	1,5 kN	2,1 kN	2,1 kN	2,9 kN
Loading Class	2A	2A	1C	2C	2C	3B	1C	2C	2C	3B



Bare Panel



Aluminium Foil / Galvanized Steel Covered Panels



Ceramic / Stone / Wood Panels

System with ffh:15 cm M14 pedestal

	Bare Panel				Aluminium Foil / Galvanized Steel Covered Panels				Ceramic / Stone / Wood Panels <small>Top coverings are excluded from measurements.</small>			
Product Code	KK-S30 KF-S30	KK-S38 KF-S38	KG-S30	KG-S38	FF-S30	FF-S38	GG-S30	GG-S38	SK-S30 SF-S30	SK-S38 SF-S38	SG-S30	SG-S38
Top Covering	Bare	Bare	Bare	Bare	Aluminium Foil	Aluminium Foil	Galvanized Steel	Galvanized Steel	Ceramic Stone Wood	Ceramic Stone Wood	Ceramic Stone Wood	Ceramic Stone Wood
Core	30 mm High Density Chipboard	38 mm High Density Chipboard	30 mm High Density Chipboard	38 mm High Density Chipboard	30 mm High Density Chipboard	38 mm High Density Chipboard	30 mm High Density Chipboard	38 mm High Density Chipboard	30 mm High Density Chipboard	38 mm High Density Chipboard	30 mm High Density Chipboard	38 mm High Density Chipboard
Bottom Covering	Bare / Aluminium Foil	Bare / Aluminium Foil	Bare / Aluminium Foil	Bare / Aluminium Foil	Aluminium Foil	Aluminium Foil	Galvanized Steel	Galvanized Steel	Bared / Aluminium Foil	Bared / Aluminium Foil	Galvanized Steel	Galvanized Steel
Edge Covering	Antistatic PVC Edge Band	Antistatic PVC Edge Band	Antistatic PVC Edge Band	Antistatic PVC Edge Band	Antistatic PVC Edge Band	Antistatic PVC Edge Band	Antistatic PVC Edge Band	Antistatic PVC Edge Band	Antistatic PVC Edge Band	Antistatic PVC Edge Band	Antistatic PVC Edge Band	Antistatic PVC Edge Band
Ultimate Load	4,0 kN	6,2 kN	6,3 kN	8,6 kN	4,0 kN	6,2 kN	7,4 kN	9,2 kN	4,0 kN	6,2 kN	6,3 kN	8,6 kN
Working Load	1,5 kN	2,1 kN	2,1 kN	2,9 kN	1,5 kN	2,1 kN	2,5 kN	3,1 kN	1,5 kN	2,1 kN	2,1 kN	2,9 kN
Loading Class	1C	2C	2C	3B	1C	2C	2A	4A	1C	2C	2C	3B











calcium sulphate panels



28mm / 30 mm / 38 mm thickness, high density calcium sulphate core is used depending on panel types of Onto. These panels are used for the areas which requires high loading capacities and A1 fire resistance.

Panel Types;

- Encapsulated Panel
- Encapsulated Corner Lock Panel
- PVC Covered Panel
- HPL Covered Panel
- Bare Panel
- Aluminium Foil / Galvanized Steel Covered Panel
- Ceramic / Stone / Wood Covered Panel

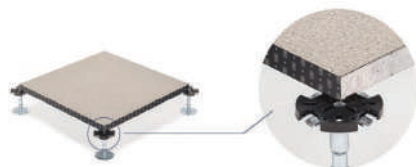




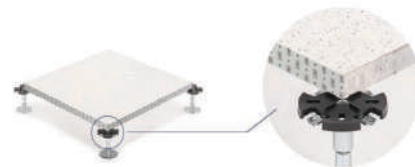
Encapsulated Calcium Sulphate Panel



Corner Lock Encapsulated Calcium Sulphate Panel



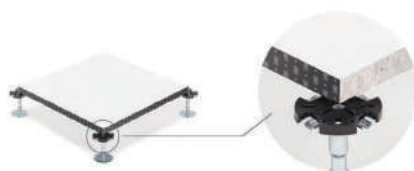
PVC Calcium Sulphate Panel



HPL Calcium Sulphate Panel

System with ffh:15 cm M14 pedestal

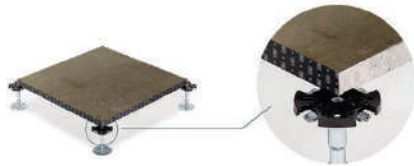
	Encapsulated Calcium Sulphate Panel	Corner Lock Encapsulated Calcium Sulphate Panel	PVC Calcium Sulphate Panel				HPL Calcium Sulphate Panel			
Product Code	EN-Ca28	EN-CaCL28	PF-Ca30	PF-Ca38	PG-Ca30	PG-Ca38	LF-Ca30	LF-Ca38	LG-Ca30	LG-Ca38
Top Covering	Galvanized Steel	Galvanized Steel	2,0 mm Antistatic PVC	2,0 mm Antistatic PVC	2,0 mm Antistatic PVC	2,0 mm Antistatic PVC	1,0 mm HPL	1,0 mm HPL	1,0 mm HPL	1,0 mm HPL
Core	28 mm 1580 kg/m ³ Monoblock Calcium Sulphate	28 mm 1580 kg/m ³ Monoblock Calcium Sulphate	30 mm 1580 kg/m ³ Monoblock Calcium Sulphate	38 mm 1580 kg/m ³ Monoblock Calcium Sulphate	30 mm 1580 kg/m ³ Monoblock Calcium Sulphate	38 mm 1580 kg/m ³ Monoblock Calcium Sulphate	30 mm 1580 kg/m ³ Monoblock Calcium Sulphate	38 mm 1580 kg/m ³ Monoblock Calcium Sulphate	30 mm 1580 kg/m ³ Monoblock Calcium Sulphate	38 mm 1580 kg/m ³ Monoblock Calcium Sulphate
Bottom Covering	Galvanized Steel	Galvanized Steel	Aluminium Foil	Aluminium Foil	Galvanized Steel	Galvanized Steel	Aluminium Foil	Aluminium Foil	Galvanized Steel	Galvanized Steel
Edge Covering	Galvanized Steel	Galvanized Steel	Antistatic PVC Edge Band	Antistatic PVC Edge Band	Antistatic PVC Edge Band	Antistatic PVC Edge Band	Antistatic PVC Edge Band	Antistatic PVC Edge Band	Antistatic PVC Edge Band	Antistatic PVC Edge Band
Ultimate Load	8,1 kN	8,1 kN	4,0 kN	6,0 kN	6,4 kN	8,6 kN	4,0 kN	6,0 kN	6,4 kN	8,6 kN
Working Load	2,7 kN	2,7 kN	1,33 kN	2,0 kN	2,1 kN	2,9 kN	1,33 kN	2,0 kN	2,1 kN	2,9 kN
Loading Class	3A	3A	1A	2A	2A	3A	1A	2A	2A	3A



Bare Panel



Aluminium Foil / Galvanized Steel Covered Panels



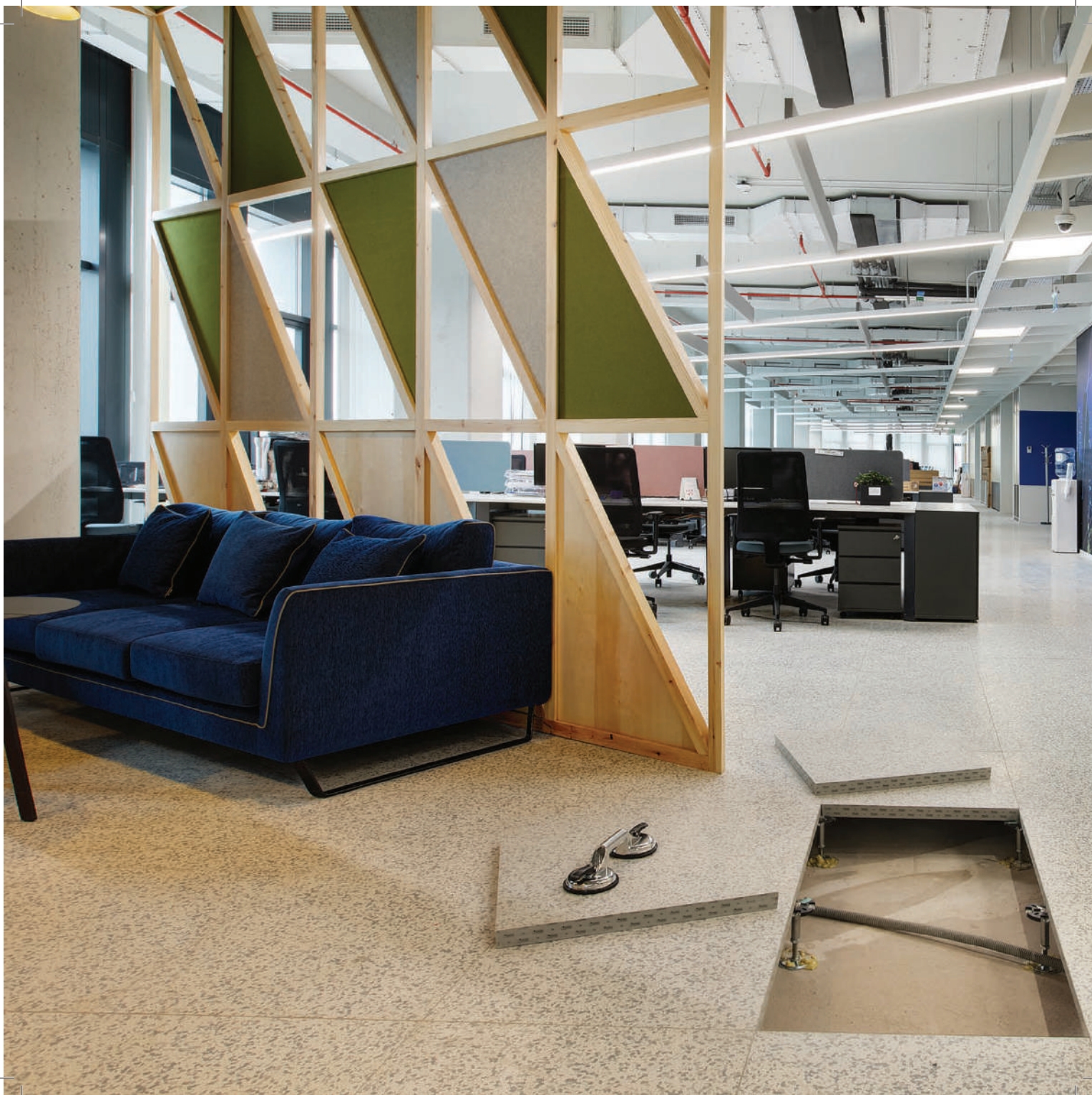
Ceramic / Stone / Wood Panels

System with ffh:15 cm M14 pedestal

	Bare Panel				Aluminium Foil / Galvanized Steel Covered Panels				Ceramic / Stone / Wood Panels <small>Top coverings are excluded from measurements.</small>			
Product Code	KK-Ca34 KF-Ca34	KK-Ca38 KF-Ca38	KG-Ca30	KG-Ca38	FF-Ca34	FF-Ca38	GG-Ca30	GG-Ca38	SK-Ca34 SF-Ca34	SK-Ca38 SF-Ca38	SG-Ca30	SG-Ca38
Top Covering	Bare	Bare	Bare	Bare	Aluminium Foil	Aluminium Foil	Galvanized Steel	Galvanized Steel	Ceramic Stone Wood	Ceramic Stone Wood	Ceramic Stone Wood	Ceramic Stone Wood
Core	30 mm 1580 kg/m ³ Monoblock Calcium Sulphate	38 mm 1580 kg/m ³ Monoblock Calcium Sulphate	30 mm 1580 kg/m ³ Monoblock Calcium Sulphate	38 mm 1580 kg/m ³ Monoblock Calcium Sulphate	30 mm 1580 kg/m ³ Monoblock Calcium Sulphate	38 mm 1580 kg/m ³ Monoblock Calcium Sulphate	30 mm 1580 kg/m ³ Monoblock Calcium Sulphate	38 mm 1580 kg/m ³ Monoblock Calcium Sulphate	30 mm 1580 kg/m ³ Monoblock Calcium Sulphate	38 mm 1580 kg/m ³ Monoblock Calcium Sulphate	30 mm 1580 kg/m ³ Monoblock Calcium Sulphate	38 mm 1580 kg/m ³ Monoblock Calcium Sulphate
Bottom Covering	Bare / Aluminium Foil	Bare / Aluminium Foil	Galvanized Steel	Galvanized Steel	Bare / Aluminium Foil	Bare / Aluminium Foil	Galvanized Steel	Galvanized Steel	Bare / Aluminium Foil	Bare / Aluminium Foil	Galvanized Steel	Galvanized Steel
Edge Covering	Antistatic PVC Edge Band	Antistatic PVC Edge Band	Antistatic PVC Edge Band	Antistatic PVC Edge Band	Antistatic PVC Edge Band	Antistatic PVC Edge Band	Antistatic PVC Edge Band	Antistatic PVC Edge Band	Antistatic PVC Edge Band	Antistatic PVC Edge Band	Antistatic PVC Edge Band	Antistatic PVC Edge Band
Ultimate Load	4,5 kN	6,0 kN	6,4 kN	8,6 kN	4,5 kN	6,0 kN	8,0 kN	10,0 kN	4,5 kN	6,0 kN	6,4 kN	8,6 kN
Working Load	1,5 kN	2,0 kN	2,1 kN	2,9 kN	1,5 kN	2,0 kN	2,6 kN	3,3 kN	1,5 kN	2,0 kN	2,1 kN	2,9 kN
Loading Class	1A	2A	2A	3A	1A	2A	3A	5A	1A	2A	2A	3A









P R E T O



chipboard panels

P R E T O

28mm thickness, high density chipboard core is used for encapsulated panel types of Preto.

Panel Types;

- Encapsulated Panel
- Encapsulated Corner Lock Panel





Encapsulated Chipboard Panel



Corner Lock Encapsulated Chipboard Panel

EN 12825

	Encapsulated Chipboard Panel	Corner Lock Encapsulated Chipboard Panel
Product Code	EN-S28	EN-SCL28
Top Covering	Galvanized Steel	Galvanized Steel
Core	28 mm High Density Chipboard	28 mm High Density Chipboard
Bottom Covering	Galvanized Steel	Galvanized Steel
Edge Covering	Galvanized Steel	Galvanized Steel
Ultimate Load	5,3 kN	5,3 kN
Working Load	1,8 kN	1,8 kN
Loading Class	1A	1A

System with ffn,15 cm M14 pedestal





calcium sulphate panels

P R E T O

28mm / 30mm thickness, high density calcium sulphate core is used according to panel types of Preto. Calcium Sulphate cored panels are highly recommended when fire resistance is needed.

Panel Types;

- Encapsulated Panel
- Encapsulated Corner Lock Panel
- PVC Covered Panel



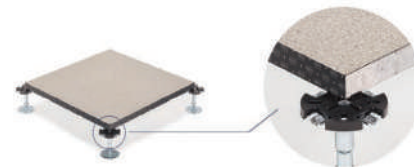




Corner Lock Encapsulated Calcium Sulphate Panel



Encapsulated Calcium Sulphate Panel



PVC Calcium Sulphate Panel

EN 12825

	Encapsulated Calcium Sulphate Panel	Corner Lock Encapsulated Calcium Sulphate Panel	PVC Calcium Sulphate Panel
Product Code	EN-Ca28	EN-CaCL28	PG-Ca30
Top Covering	Galvanized Steel	Galvanized Steel	2,0 mm Antistatic PVC
Core	28 mm 1300 kg/m ³ Monoblock Calcium Sulphate	28 mm 1300 kg/m ³ Monoblock Calcium Sulphate	30 mm High Density Calcium Sulphate
Bottom Covering	Galvanized Steel	Galvanized Steel	Galvanized Steel
Edge Covering	Galvanized Steel	Galvanized Steel	Antistatic PVC Edge Band
Ultimate Load	5,4 kN	5,4 kN	4,2 kN
Working Load	1,8 kN	1,8 kN	2,1 kN
Loading Class	1A	1A	1A

System with ffn15 cm M14 pedestal



cementitious panels



This type of panel is produced by injecting concrete between two - specially designed - steel plates. With this structure, cementitious panels reach the higher load capacity and fire resistance.



CISCA

	Cementitious Panel	
Product Code	FS800 Bare	FS1000 Bare
Top Covering	0,7 mm Galvanized Steel	1,0 mm Galvanized Steel
Core	Cementitious	Cementitious
Bottom Covering	0,8 mm Galvanized Steel	1,0 mm Galvanized Steel
Edge Covering	Galvanized Steel	Galvanized Steel
Ultimate Load	10,0 kN	13,0 kN
Working Load	3,6 kN With Permanent Set Less Than 2,54 mm And Permanent Set Less Than 0,25 mm	4,5 kN With Permanent Set Less Than 2,54 mm And Permanent Set Less Than 0,25 mm
Loading Class	Light	Medium

System with ffh:15 cm M14 pedestal

understructure

Pedestals

Galvanized steel pedestals can be differentiated due to the height of the finished installation. FFH:10cm and above pedestals have ± 2 cm / $\pm 3,5$ cm tolerance.



Stringers

Stringer should be used over 20 cm height pedestal systems.





Diagonal Bracing

In the high pedestals used raised floor systems, diagonal bracing is used in order to increase the durability of the system for earthquake risk. The quantity of the diagonal bracings are decided due to the projects.





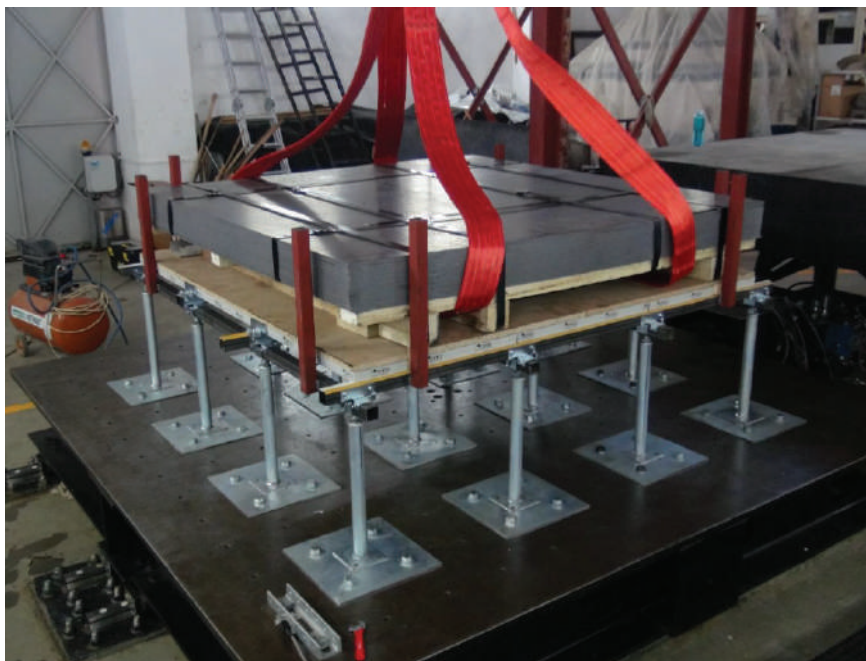


Onto Seismic Systems

Onto Seismic System is designed for earthquake and static loads. The system is tested in two phases in the laboratories in earthquake engineering department of Bosphorus University Kandilli Observatory and Earthquake Research Institute.

Raised Access Floor system passed the vertical load test for 22kN/m^2 in the first phase. The system is loaded 11kN/m^2 and its seismic performance was evaluated on earthquake shake table tests with $0,81\text{ gr}$ PGA (Peak Ground Acceleration) in the second phase. This was the value of 1995 Kobe earthquake (KJMA) ($M_w=6.9$).

Onto Seismic System do not require stringers. Thus it allows to have cables and ventilating ducts because of the wide scope under the system.





Download
Brochure



Follow Us



Unigen Yapı Malzemeleri

UNIGEN

İSTANBUL HEADQUARTER

İnönü Mah. Kayışdağı Cad. Kandıç İş Merkezi
No:128 K:2 34755 Ataşehir - İstanbul / Türkiye
T: +90 216 577 04 34 F: +90 216 577 04 35

FACTORY

Düzce 1. OSB 6. Cadde No:3 Beyköy
Merkez - Düzce / Türkiye
T: +90 380 526 04 90 F: +90 380 526 28 90

İSTANBUL WAREHOUSE

Eyüp Sultan Mah. İmam Rabbani Cad. Dekor Sk.
No:1 K:2 Sancaktepe - İstanbul / Türkiye
T: +90 216 311 07 35 F: +90 216 311 07 36